



上海大学  
SHANGHAI UNIVERSITY

Update: 29<sup>th</sup>, January 2024

# Shanghai Government Scholarship Application Guide

## Shanghai University 2024



### ● CONTACT US

Baoshan Campus :

No. 99 Shangda Road, BaoShan District,  
Shanghai 200444 China

TEL: 86-21-66136615

Website: <https://apply.shu.edu.cn>

Email: [apply9@oa.shu.edu.cn](mailto:apply9@oa.shu.edu.cn) (MA/PhD)

[apply1@oa.shu.edu.cn](mailto:apply1@oa.shu.edu.cn) (BA)

Scan the QR  
code to get more  
information





## 1. ABOUT SHU

Shanghai University (SHU), is a member University of Project 211 and a leading comprehensive university co-sponsored by the Ministry of Education and Shanghai Municipality. It is among Shanghai's first pilot programs of high-level construction of local university. As a university with first-class discipline construction qualified by the Ministry of Education, SHU reaches 271st among global universities rankings in ARWU 2023, 421st in US News 2023 and 97th in THE Higher Education World University Influence Rankings 2023.

SHU offers a wide range of disciplines, covering philosophy, economics, law, education, literature, history, natural science, engineering, medical science, management, art, multi-discipline, etc.

There are more than 40,000 full-time students in Shanghai University, including nearly 3,000 international students from more than 150 countries. Modern campuses with well-equipped dormitory and sports facilities, and easy accessibility with subway nearby provide a pleasant environment for students of different languages and cultures to study here.

## 2. Scholarship Supporting Categories and Application Deadline

### Who can apply:

This scholarship program is for new international students of Bachelor, Master and Doctoral Programs.

- ✧ Applicants of Master and Doctoral Programs could apply for FULL scholarship and PARTIAL scholarship.
- ✧ Applicants of Bachelor Program could apply for PARTIAL scholarship.

**Majors under this scholarship program:** No Limit (Please refer to application guide for graduate programs)

**Deadline for application submission:** May 15<sup>th</sup>, 2024





### 3. Scholarship Details

Categories Details	Shanghai Government Scholarship	
	Full	Partial
<b>Tuition fees within the normal academic period</b>	Included	Included
<b>Accommodation</b>	The host university will provide free on-campus accommodation.  Off-campus housing subsidies: RMB700/month for undergraduates; RMB 700/month for master students; RMB 1000/month for PhD.	×
<b>Stipend</b>	RMB2500/month for undergraduates;  RMB 3000/month for master students;  RMB 3500/month for PhD.	×
<b>Comprehensive Medical Insurance</b>	Included	Included

Notes:

1. Stipend is monthly paid by Shanghai University. Scholarship students who register before the 15<sup>th</sup> (15<sup>th</sup> included) of the registration month will receive full stipend; those who register after the 15<sup>th</sup> will receive half stipend. Graduates can get another half month stipend after the graduation day determined by the university. If scholarship students have left China for more than 15 days due to personal reasons during his/her study period (except public holidays), his/her stipend during that time will be suspended.
2. Please search “Introduction and Claim Guide of Comprehensive Medical Insurance for Foreign Students” on <https://www.lxbx.net/home> for insurance information and procedure.





## 4. Scholarship Eligibility

Applicants are qualified for scholarship selection only after they get pre-admission in applying relevant majors. For details, please refer to the ***Guide of Application for Admission for Undergraduate/ Master/PhD Program***. Online application website: <https://apply.shu.edu.cn/>. Applicants are required to meet the following conditions:

### 4.1 Basic Eligibility

Be a citizen of a country other than the PRC and in good health both mentally and physically

*According to the regulations of the Ministry of Education of China, those who immigrated to other countries from the Mainland China, Hong Kong, Macao or Taiwan and applying to study in Shanghai University as international students, should meet the following additional requirements: the applicants must hold valid passport or other relevant international recognized documents for at least 4 years; meanwhile, in the latest 4 years (by each April 30th of the year of University registration), the applicants must have lived overseas for 2 years (Living overseas for 9 months can be converted to 1 year, which is subject to the exit-entry stamp on visa.).*

### 4.2 Language Proficiency

**4.2.1** If you are applying for **Chinese-taught programs**, HSK certificates within two years are required (HSK refers to Chinese Proficiency Test. You can find information on: [www.chinesetest.cn](http://www.chinesetest.cn)):

**HSK 5 with the score 210 or above** for majors in **Science or Engineering, Economics or Management and Art**;

**HSK 6 with the score 180 or above** for majors in **Humanities**.

#### ✧ HSK Exemptions

The following types of applicants are exempt from taking the HSK:

- ✓ Native speaker of Chinese;
- ✓ The previous degree is fully taught in Chinese.

**4.2.2** If you are applying for **English-taught programs**:

**IELTS (Type A) 6.5 or TOEFL IBT 90** or above received within the recent two years (TOEFL MyBest™ Score and TOEFL essentials accepted) .

We also accept other internationally recognized English proficiency tests with scores of the same level and proof of certificates is needed.

#### ✧ TOEFL or IELTS Exemptions

The following types of applicants are exempt from taking the TOEFL or IELTS:

- ✓ Native speakers of English;
- ✓ The previous degree is fully taught in English.





## 4. Scholarship Eligibility

### 4.3 Academic Requirement

#### 4.3.1 For Bachelor's Programs

- ✓ Be an academically excellent holder of high school diploma, GPA 3.0 or above (Note: 4-Point GPA System) ;
- ✓ For Science or Engineering programs, applicants are qualified in mathematics and physics in high school. For Economics or Management programs, applicants are qualified in mathematics in high school. For Arts programs, applicants are required to submit his/her portfolio.
- ✓ Applicants should be under the age of 25.

#### 4.3.2 For Master's Programs

- ✓ Be an academically excellent holder of a Bachelor's degree;  
*Graduates who did not receive their degree certificates at the time of application should provide pre-graduation certificates issued by their schools or colleges to prove their ability to graduate smoothly and obtain their degree certificates by the end of July 2024.*
- ✓ Relevant undergraduate academic background is required, or have completed undergraduate-level courses relevant to intended graduate major, with GPA 2.5 or above (Note: 4-Point GPA System) .
- ✓ Accepted by a prospective professor at Shanghai University  
*Choose supervisor online when choosing a major in the online application system and get accepted by a prospective professor.*  
*Please note that it is not required to choose supervisor for the following Master's programs: School of Economics, MBA center and SILC Business School. The colleges will arrange the supervisor for new students after registration at Shanghai University.*
- ✓ Students applying to programs of arts must have relative academic background and submit a portfolio. Students applying to some programs of Shanghai Film Academy should have: science and engineering background, and professional background that approximates to or matches with the supervisor's research area.
- ✓ Applicants should be under the age of 35.





## 4. Scholarship Eligibility

### 4.3.3 For PhD's Programs

- ✓ Be an academically excellent holder of a Master's degree;  
*Graduates who did not receive their degree certificates at the time of application should provide pre-graduation certificates issued by their schools or colleges to prove their ability to graduate smoothly and obtain their degree certificates by the end of July 2024.*
- ✓ Relevant master's degree background and academic achievements, with GPA 3.0 or above (Note: 4-Point GPA System) .
- ✓ Accepted by a prospective professor at Shanghai University  
*Choose supervisor online when choosing a major in the online application system and get accepted by a prospective professor.*  
*Please note that it is not required to choose supervisor for the PhD programs in School of Economic. The colleges will arrange the supervisor for new students after registration at Shanghai University.*
- ✓ Students applying to programs of arts must have relative academic background and submit a portfolio. Students applying to programs of Shanghai Film Academy should have: science and engineering background, and professional background that approximates to or matches with the supervisor's research.
- ✓ Applicants should be under the age of 40.

### 4.4 No other type of scholarship was granted at the time of application.





## 5. Documentation

The following materials should be prepared with complete and clear electronic versions.

### ☒ Information Page of Passport

*A clear copy of your valid passport with your name, photo, birth date, place of birth, date of issue, date of expiry.*

*Visa page is required for applicants who are not in their home country.*

### ☒ ID photo

*The passport-size photo (one-inch, 390\*570) should be taken within the last six months, bareheaded, full-faced with blue-color background; the photo is required to submit as JPG image less than 100kb.*

### ☒ Selfie video

*Applicants should submit a video including self-introduction and study plan in China. avi, mov, or mp4 less than 50 MB are accepted. The language of the video should be consistent with the language of the program you are applying for (English or Chinese).*

### ☒ Highest Degree Diploma or Graduation Certificate

*Graduates who have not yet received their degree certificates at the time of application are required to provide a pre-graduation certificate issued by their school or college, indicating the expected graduation time.*

### ☒ Academic transcripts

*Graduates-to be should provide official transcripts of all courses completed by the time of application.*

### ☒ Language Proficiency Certificate

*If the official language proficiency is not available at the time of application, applicants may upload a screenshot of the results queried on the website. The original certificate must be provided at the time of new student registration.*

### ☒ Two Recommendation Letters with Signature

*Written in English or Chinese by two different professors or associate professors or experts from related fields.*

*The referee's signature and contact information are necessary.*



## 5. Documentation

### ☒ Choose Supervisor online and Get Accepted (For post-graduate only)

*Please note that it is not required to choose supervisor for School of Economics, MBA center and SILC Business School.*

### ☒ Personal Statement (including study plan and research proposal in China)

*Written in English or Chinese (according to the teaching language of the program), more than 800 words, including research achievements so far (e.g., title and abstracts of graduation thesis or published paper), reasons of choosing SHU, study and research plan, future career plan, etc.*

### ☒ Statement of Financial Support

*\* You can download the template at <https://apply.shu.edu.cn/application/index>*

### ☒ Awards (evidential materials for participation in activities or contests)

*Please merge into one PDF file if there are multiple copies.*

### ☒ Certificate of No Criminal Record

*\* For any applicants who cannot get the Certificate of No Criminal Record at home country, please sign the **No criminal record Commitment** with Shanghai University (You can download at <https://apply.shu.edu.cn/application/index> ).*

### ☒ Academic Research Documents (Refer to Departmental standards)

★ *Evidential materials of published academic papers and patent certificates.*

★ *Applicants for art majors should provide at least two examples of artworks.*

**Notes:**

- *Documents not in Chinese or English should be accompanied by Chinese/English translation provided by notarized or issuing departments;*
- *Only scanned copies of the above materials are required for application, and the original documents are required for reference at the time of registration.*
- *Uploaded supporting documents must be clear, authentic and valid. Applicants are recommended to use a professional device to scan the relevant documents. Applicants shall bear the consequences caused by untrue, unclear or unidentifiable uploaded materials.*

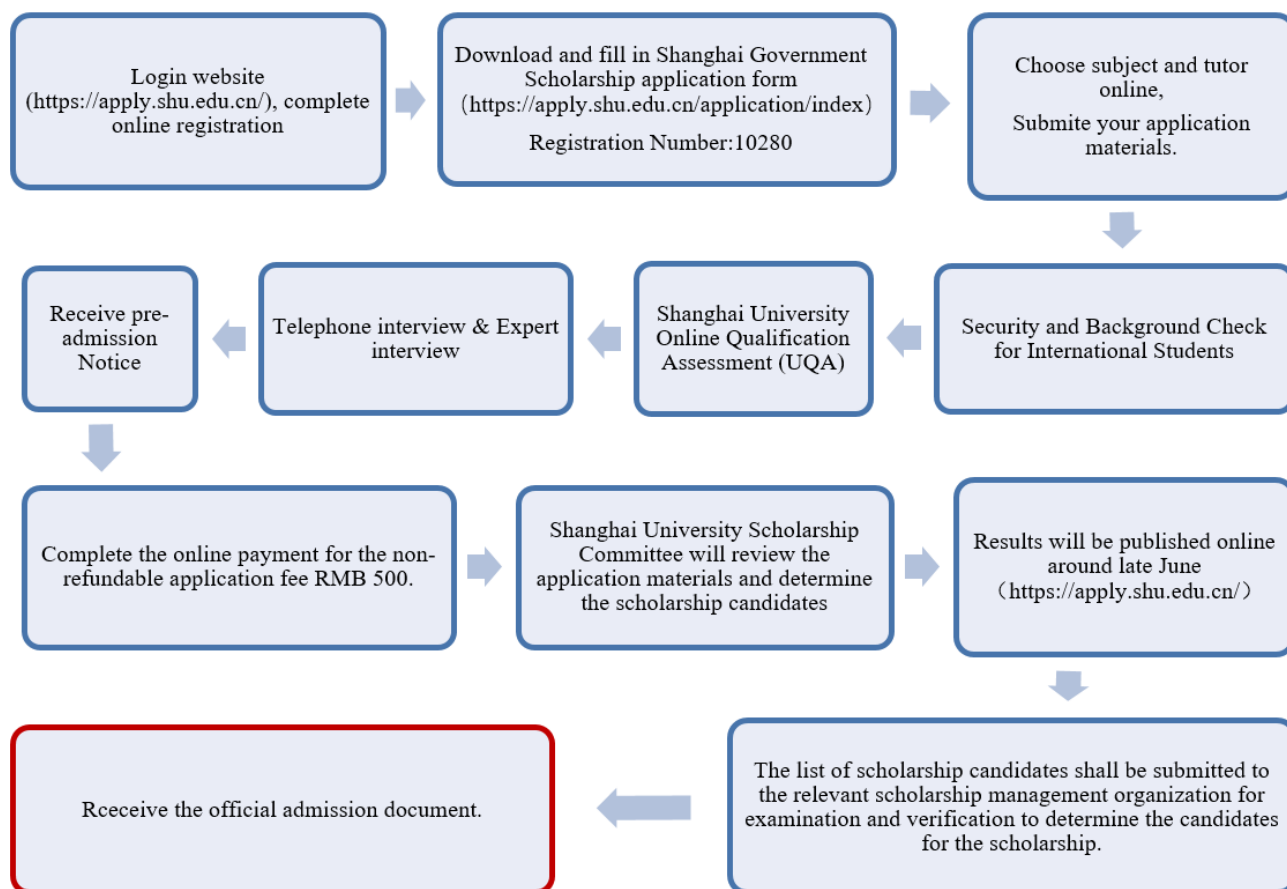






## 6. Scholarship Application Methods

### 6.1. How to Apply:



#### ● Shanghai University Security and Background Check (SBC) for International Students

The purpose of SBC is to check whether the applicant's personal condition is appropriate to enter the University. It includes questions about the applicant's personal background, education background and physical health. Please note that you must answer truthfully for verification, and the results will be put on record by Shanghai University.

#### ● University Qualification Assessment (UQA) for International Students

Only individual international applicants for degree programs are required to take UQA, which aims to evaluate whether an international student is eligible for degree programs in Shanghai University. Here is the portal for UQA: <https://apply.shu.edu.cn/>. Please note that you should take this test seriously, as the test results will be taken as an important consideration for admission. More information about UQA could be found in the following pie chart and samples.



## 6. Scholarship Application Methods



- ◆ 120 points
- ◆ 110-120 questions
- ◆ 2 minutes/per question
- ◆ Single choice

### Note:

- ◆ Non-stop during each part
- ◆ One account only for one test
- ◆ Rlogin means restart the part
- ◆ Unchangeable after submit

Samples (for applicants with no Chinese study experience)

Have you learnt Chinese before? (If you choose "No", this part of test will be skipped)

- A: Yes, continue this part  
B: Never, skip this part

### ● About Interview

An interview will be arranged and conducted by the admission staff and professors via video conferencing or telephone for shortlisted candidates who have passed SBC and UQA. The interview is expected to last for 10-15 minutes, and the language used depends on the language of instruction of your degree program.

### ● Expert Committee Interview

In addition to the interview conducted by the admissions staff, scholarship applicants may also need to attend an expert committee interview with professors of relevant majors.

## 6.2. Application Results

If the candidates are qualified by the relevant scholarship management institutions, they will be awarded Chinese Government scholarship or Shanghai University Scholarship to study in China. The results of the proposed admission will be published online from mid-to-late June of 2024 (<https://apply.shu.edu.cn/>). The final result of the scholarship admission is based on the paper admission materials.



## 7. Others

**7.1** Scholarship applicants must submit their application materials directly to Shanghai University in person. Those who apply by agencies will be disqualified from scholarship.

**7.2** Scholarship recipients must complete the registration and enrollment on scheduled time in accordance with the university regulations. Those who miss the deadline without approval will be disqualified from scholarship.

**7.3** Scholarship recipients must bring all original documents for registration. Provision of any false/misleading information or failure to provide the requested supporting documents will lead to disqualification of admission.

**7.4** Scholarship recipients are required to attend the annual scholarship review, which evaluates the academic performance and daily performance for the whole academic year. Those who fail to pass will lose their eligibility for the next year's scholarship.

**7.5** Scholarship recipients cannot change the major, or transfer to another University, or prolong the length of study in principle.

**7.6** Those items shall be explained by the college of International Education, Shanghai University.

## 8. Contact us

**College of International Education, Shanghai University**

**Add:** No. 99 Shangda Road, BaoShan District, Shanghai 200444, China.

**Tel:** +86-21-66136615

**Contact:** Ms. LIU Yuan, Ms. WANG Jing, Ms. ZHANG Li, Ms. LI Lina

**Email:** [apply9@oa.shu.edu.cn](mailto:apply9@oa.shu.edu.cn) (MA /PhD)

[apply1@oa.shu.edu.cn](mailto:apply1@oa.shu.edu.cn) (BA)

**Website:** <https://apply.shu.edu.cn/>

For more information, please follow us on

WeChat public account: StudyatSHU

